



6TH ANNUAL
LANCASTER, PA

PRINT CRAWL

FRIDAY, SEPT. 1, 2023 | 5-9 PM



LOOK INSIDE FOR THE MAP, COUPONS,
ACTIVITIES, AND PRINTING FACTS!

LANCASTERPRINTCRAWL.COM

 @lancasterprintcrawl

LANCASTER'S LETTERPRESS SHOP



A graphic design and letterpress printing studio that combines modern and century old technology to create high quality, tactile products that make a lasting impression.

LETTERPRESS WORKSHOPS | TEAM BUILDING | GRAPHIC DESIGN
INVITATIONS | PHOTO MATS | STATIONERY | POSTERS | CARDS



typothecary
LETTERPRESS & DESIGN

TYPOTHECARYLETTERPRESS.COM

TABLE OF CONTENTS

Map (how to find the print shops and other important info) . . .	18-19
Raffle (a sample of raffle items available)	24-25
Crossword	30-31
(return completed crossword to Decades for arcade Tokens)	
FAQ (everything you need to know)	32-34

COUPONS:

- page 5 - Foxduck - 25% off online purchases
- page 6 - Our Town Brewery - 2 for 1 Pours
- page 9 - Levensgoods - 2 for 1 Pints
- page 10 - Larkstone - 10% off Printed Goods
- page 13 - Hempfield Botanicals - 20% off
- page 29 - Central Market Flowers - 20% off

PRINTING FACTS

can be found on pages 7, 10, 13, 14, 16, 20, 28

LANCASTERPRINTCRAWL.COM

 @lancasterprintcrawl

FORCE pkg

- Graphic Design
- Brand Development
- Comps & Prototypes
- Short Run Printing



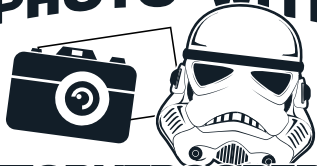
8 N Queen St • Suite 12W • Lanc PA

717-949-3152

forcepkg.com

6TH ANNUAL

GET YOUR
PHOTO WITH



STORMTROOPERS
DONATIONS WELCOME*

PRINT CRAWL

*All Proceeds Will Be Donated To Pennsylvania College of Art & Design and Thaddeus Stevens College of Technology Scholarship Funds

Welcome to Lancaster Print Crawl:

A vibrant community event held in Lancaster, Pennsylvania. This engaging gathering celebrates the art of printing and aims to involve and inform the local community about the craft. Set in the heart of Lancaster, a city known for its rich history and artistic spirit, the Print Crawl brings together artists, print enthusiasts, and people of all ages for an immersive experience.

How it works:

Begin your poster-making journey at the registration table in The Square by the Visitor's Center. Following the map found at the center-fold, take your poster to each print stop to add a different printed part of the design until you end up with a completed poster. Explore the map & program to learn about our local print shops and sponsors. Some offer discounts and coupons, so make sure to check them out!

11 WEST KING STREET LANCASTER PA.

Foxduck
LANCASTER
LOCAL ETHNIC BUSINESS CENTER
FOXDUCK.COM

25% OFF
SEPT. 1ST - SEPT. 30TH

OFFER ONLINE ONLY
ENTER PROMO CODE
'PRINTCRAWL2023'



LANCASTER GIFT BOX

ENTER TO WIN!

Our gift boxes are filled with PA-made treats & are printed by the Heritage Press Museum. We believe it's important to support the Art of Letterpress Printing! Stop by our shop during the print crawl and enter to win a delicious gift box of your own!

STOP BY ON YOUR WAY TO THE HERITAGE PRESS MUSEUM!
317 N QUEEN STREET, LANCASTER, PA
LANCASTERGIFTBOX.COM

Local Printing History

Milton Hershey, founder of Hershey's Chocolate, worked for a printer in Gap, PA, before he was a Chocolatier

Did you know?

CMYK stands for Cyan, Magenta, Yellow, & Black (Key), and is the basis for all other colors in printing.



NEW | USED | RARE
VINYL | CDS | CASSETTES

OFFERING A FINELY CURATED SELECTION OF TITLES FOR MUSIC LOVERS AND COLLECTORS OF ALL TASTES AND STYLES

WWW.ADAYINTHELIFERECORDS.COM
 24A W WALNUT ST | LANCASTER, PA 17603

OUR TOWN

BREWERY

2 POURS FOR THE PRICE OF 1

MUST PRESENT THIS AD TO RECEIVE DISCOUNT. EXPIRES DECEMBER 31, 2023.

252 N. PRINCE STREET
 WWW.OURTOWNBREWERY.COM



curio.
 gallery & creative supply

- gallery exhibitions · drawing & writing materials ·
- greeting cards · workshops · sketchbook club ·

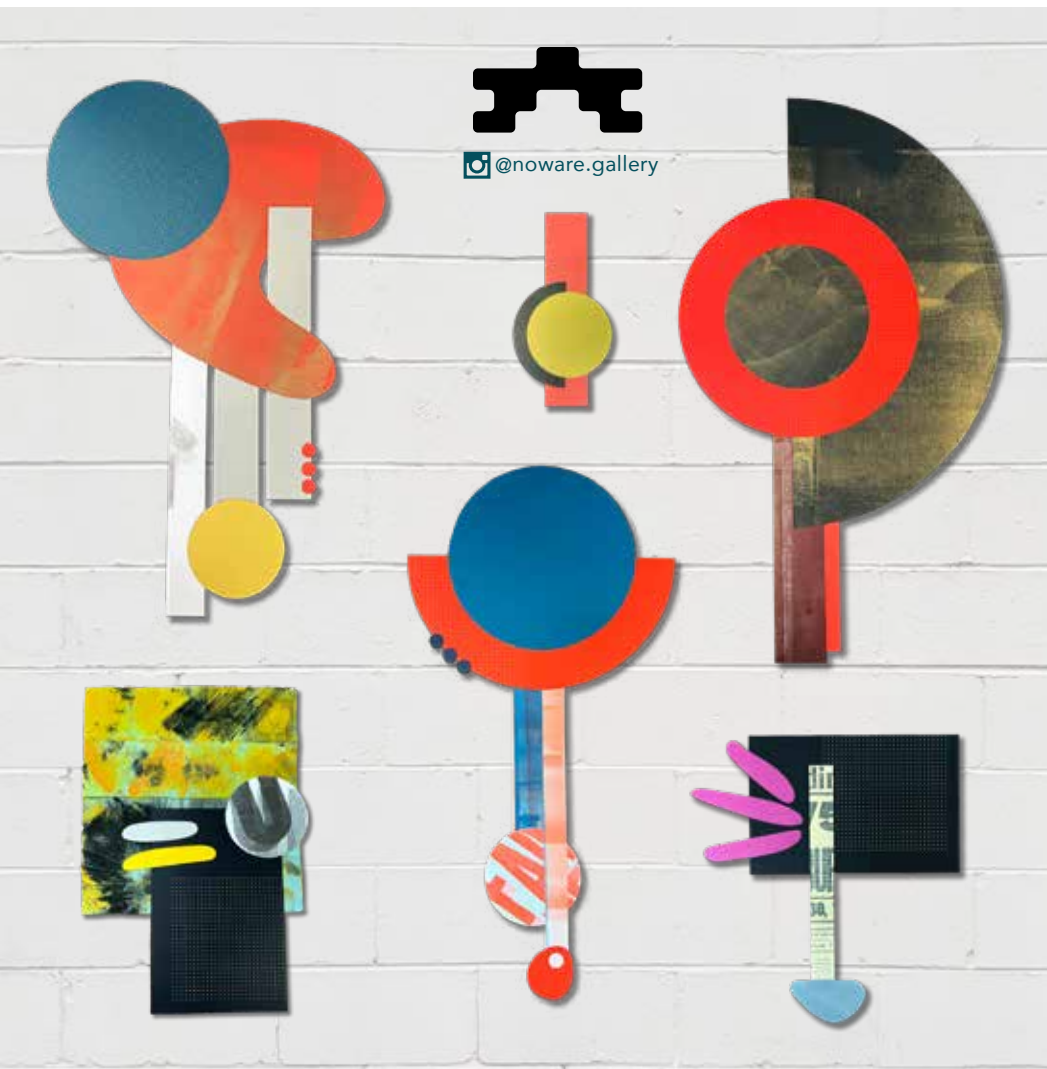
106 W Chestnut Street Lancaster, PA curiolancaster.square.site

OFFCUTS & OVERPRINTS

9.1.23 – 9.21.23 | 349 WEST GRANT STREET

OPEN: 9.1 4:30-8:30PM | 9.15 5:30-8:30PM | 9.16 11-4PM

ALL OTHER VISITS BY APPOINTMENT CONTACT MEGAN@TYPOTHECARYLETTERPRESS.COM



Levengoods

OF LANCASTER

Mighty Fine Hard Cider

BRING IN THIS AD FOR:

**2 PINTS FOR
THE PRICE OF 1**

OFFER EXPIRES SEPTEMBER 30, 2023

219 W WALNUT ST | LANCASTER

LEVENGOODCIDER.COM



Susquehanna
Litho Club

www.sl.org
FOUNDED 1958

Lancaster County Print Production Club

For information on events, visit www.sl.org

Bring this ad or mention it for free admission to a future
Susquehanna Litho Club event
(excludes Golf outing)

one free admission per person

JUMPSTART
A NEW
CREATIVE
CAREER

Enroll in our Certificate Program or explore
our variety of enrichment classes. Spark your
imagination at our Center for Creative Exploration.

PCAD.EDU/CCE

Pennsylvania
College of
Art & Design



REPLICATE
GICLÉE & DIGITAL PRINTING SERVICES

@replicateprint | replicateprint.com

LARKSTONE
apparel • gifts • lifestyle

ENJOY 10% OFF
PRINTED ITEMS

SCREEN PRINTED TOTES & SHIRTS
CARDS & MORE!

SHOPLARKSTONE.COM

Land & She

Emily is a predominately self-taught illustrator and block printer with a degree in graphic design from Tyler School of Art. She works out of her studio/home that's based in Jenkintown, PA and began Land & She in May of 2016. A few words of inspiration:

Her work is rooted in the world around her. It's finding the tiniest of inspirations in the patterns of rock formations, or feeling small amongst a vast horizon. These are things that keep her curious and looking for more.

The philosophy for Land & She is the belief that handmade work, while it may take longer to produce, ultimately creates a stronger connection and value from the artist's hands to the customer's home. Thank you for supporting her work!

landandshe.com



History of printing within Lancaster:

Printing in Lancaster, Pennsylvania has a rich history that dates back to the 18th century. The first printing activity in the region began in the 1730s when Christopher Saur, a German immigrant, established the area's first printing press. Saur's press produced German-language publications, including religious texts, almanacs, and pamphlets, catering to the growing German-speaking population. The Saur family's printing legacy continued through Christopher Saur II, who expanded their operations. Lancaster became a hub for book printing and publishing, with notable establishments such as the Lancaster Examiner and Herald newspaper founded in 1834. The printing industry in Lancaster thrived throughout the 19th and 20th centuries, and it continues to flourish today with numerous commercial printing companies, book publishers, and independent printers operating in the area, preserving the tradition of quality printing craftsmanship established by early pioneers.

“I FEEL THADDEUS STEVENS
COLLEGE HAS PREPARED ME
FOR WHAT’S TO COME NEXT”



David, '23 - Graphic Communications & Printing Technology

OPEN HOUSE
October 14, 2023
stevenscollege.edu/openhouse



Thaddeus Stevens
College of Technology

LANCASTER
PRINTERS
FAIR

SATURDAY
SEPTEMBER
16
11-4 PM

LANCASTERPRINTERSFAIR.ORG

Did you know?

Lancaster has its own Heritage Press Museum? Located on the 300 block of N Queen Street, they are committed to preserving the tradition of Letterpress printing in Lancaster.

CRYSTALS

HEMPFIELD
APOTHETIQUE

PRINTCRAWL23
FOR 20% OFF
HFB Products. Offer expires
9/15/2023 at 11:59 pm EDT.

The Gutenberg Press:

The Gutenberg Press, invented by Johannes Gutenberg in the 15th century, played a huge part in revolutionizing printing. It used movable metal letters to quickly and accurately print books. Gutenberg's most famous work was the Gutenberg Bible, the first major book printed with his press. This invention made books more affordable and accessible, spreading knowledge and ideas. The press played a crucial role in promoting literacy and the exchange of information. It laid the foundation for modern printing and had a profound impact on society and culture, and still does to this day.



**PRESTIGE
COLOR™**

Printing and Graphic Services

19 Prestige Lane • Lancaster, PA 17603

High Quality Printing

■ Digital ■ Wide Format ■ Offset

Also Providing: Mailing and Fulfillment Services

Contact us today at
717-392-1711
for a free estimate on your next printing job

History of Screen Printing:

Screen printing is a versatile and popular printing technique with a rich history. Its origins can be traced back to ancient China, where stencils were used to apply ink onto fabrics. However, modern screen printing techniques emerged in the early 20th century. The development of photo-reactive chemicals in the 1940s allowed for more detailed and accurate designs. In the 1960s, when Andy Warhol helped popularize the method in America, screen printing became associated with the vibrant and rebellious aesthetic of the Pop Art movement. Since then, it has continued to evolve and expand, finding applications in various industries, including textiles, advertising, fine art, industrial printing, and even electronics. Screen printing remains a popular and versatile printing method, known for its ability to produce high-quality and durable prints on a wide range of materials.

*You can see screen printing in action at the following stops: Steadfast Screen Printing, PCAD, & Foxduck

Local Printing History

The Lancaster Examiner and Herald, founded in 1834, played a significant role in local and regional news coverage. It was one of the earliest newspapers in the area and was produced for many years.



1912 Fruitville Pike
Lancaster, PA 17601

717.569.3773

Hours: Mon-Weds & Fri 9-6
Thurs & Sun CLOSED
Sat 9-2



Locally owned and operated since 1975

THEFRAMERYETC.NET


START



YOU MUST PICK UP YOUR POSTER AT THE REGISTRATION TABLE IN THE SQUARE

PRINT SHOPS





1. TYPOTHECARY LETTERPRESS
420 W GRANT STREET
2. STEADFAST SCREEN PRINTING
420 W GRANT STREET
3. LARKSTONE*
213 W KING STREET
4. FOXDUCK
11 W KING STREET
5. FORCEpkg (DONATION + RAFFLE)
8 N QUEEN STREET
6. PA COLLEGE OF ART & DESIGN
204 N PRINCE STREET
7. THADDEUS STEVENS COLLEGE
@ HEMPFIELD BOTANICALS
100 W WALNUT STREET
8. GABBY SHELLEY @ ADITL RECORDS*
24 W WALNUT STREET
9. HERITAGE PRESS MUSEUM 
342 N QUEEN STREET

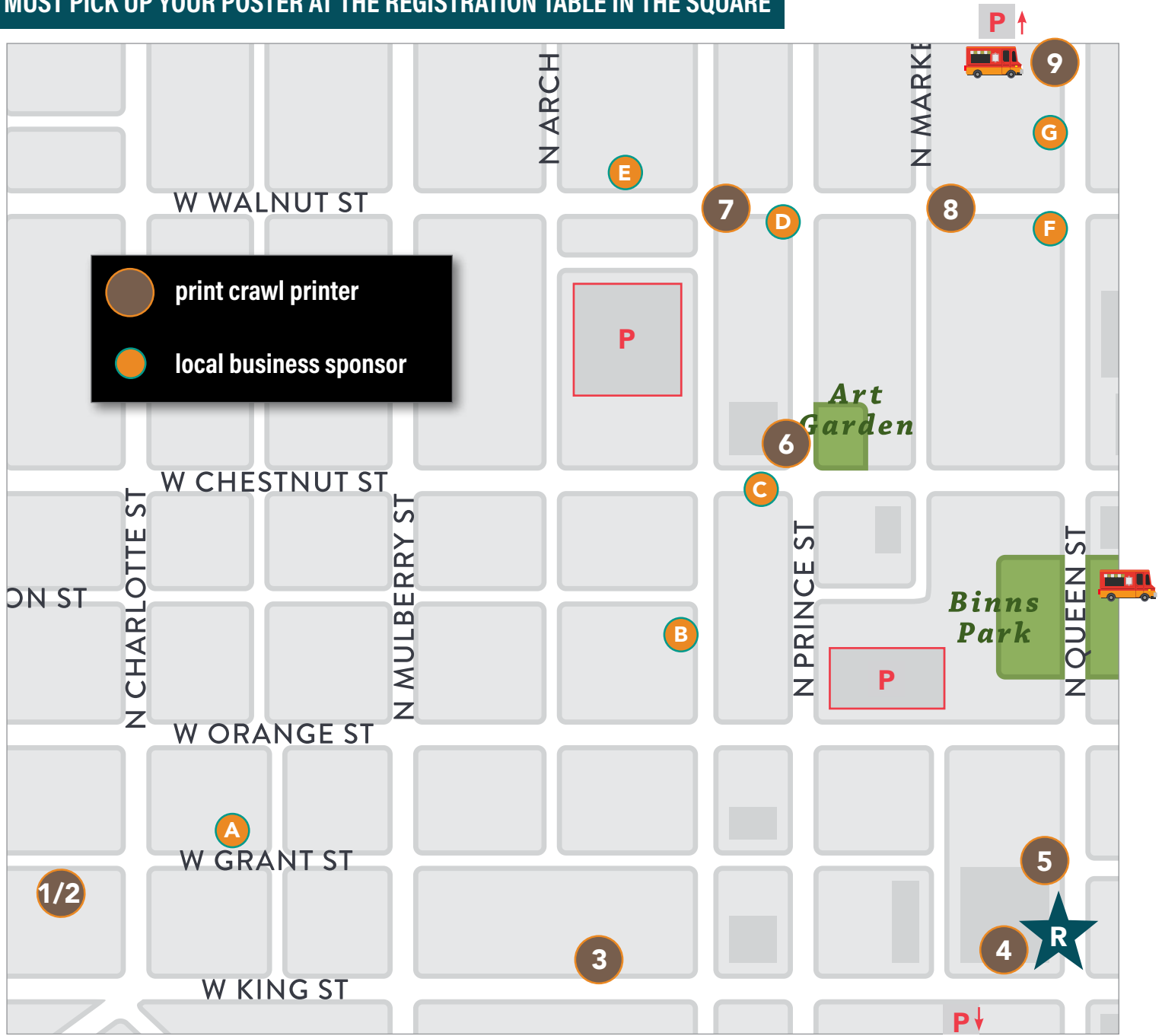
SPONSORS



- A. NOWARE GALLERY
349 W GRANT STREET
- B. ZOETROPOLIS
112 N WATER STREET
- C. CURIO. GALLERY & CREATIVE SUPPLY
106 W CHESTNUT STREET
- D. OUR TOWN BREWERY
252 N PRINCE STREET
- E. LEVENGOODS
219 W WALNUT STREET
- F. CENTRAL MARKET FLOWERS
5 W KING ST & 258 N QUEEN ST
- G. LANCASTER GIFT BOX
317 N QUEEN ST


 print crawl printer

 local business sponsor



***STOPS #3 & #8 HAVE THE EXACT SAME STAMP, YOU DON'T HAVE TO GO TO BOTH**

P = Parking Authority Parking Garage

 This event is mostly accessible - any location that is not, will have someone to assist in completing that portion of the poster.

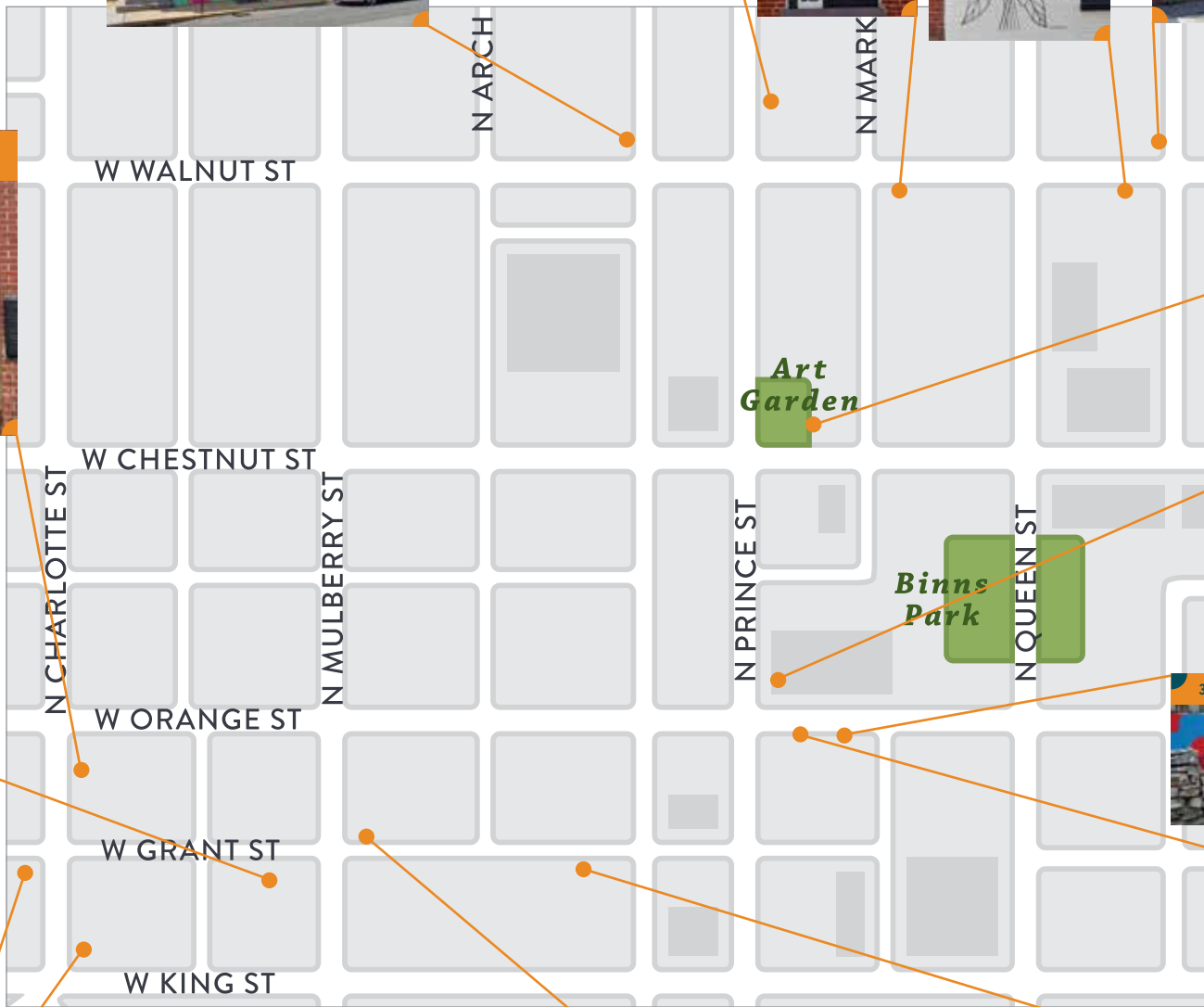
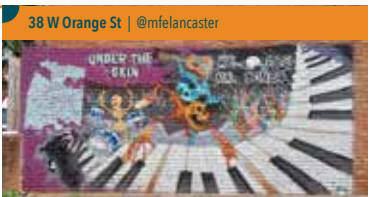
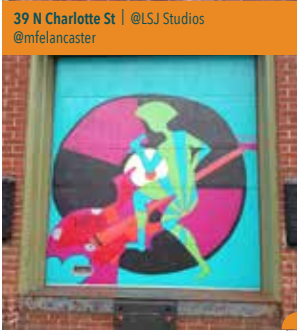
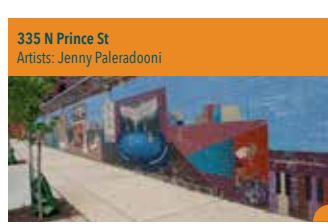
LANCASTERPRINTCRAWL.COM

 food truck located here

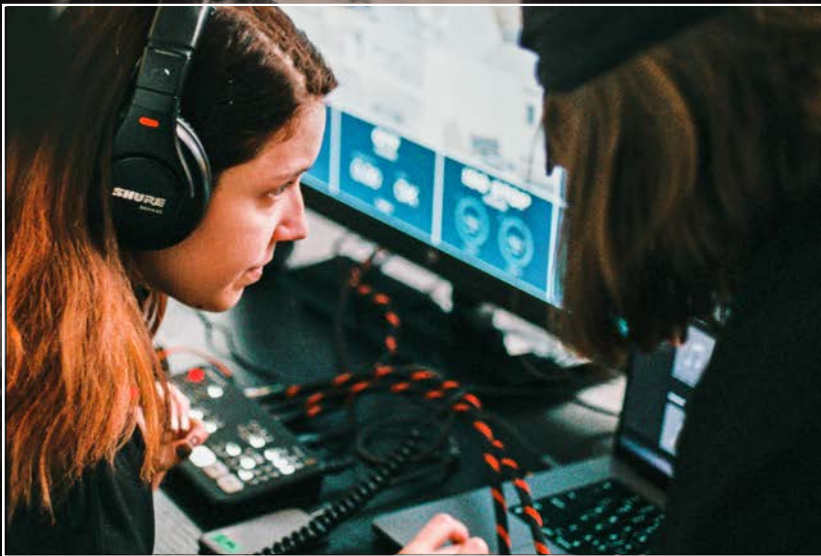
 @lancasterprintcrawl

#lancasterprintcrawl #areyouacrawler

SELFIE SPOTS WITH LOCAL MURALS



DON'T JUST GET
THEIR ATTENTION



KEEP IT.

Today's audiences are more distrustful than ever of traditional advertising. That's why we don't advertise. And we're anything but traditional. When we shoot videos for your brand, we don't make stuff up. We just tell real, human stories that build an audience — and give them a reason to stick around.

LM L I F E S T Y L E D
M E D I A

Stay Real. Stay Relevant.
Visit us at lifestyled.media

Get your print framed at....

The Great Frame Up
WHERE PICTURE FRAMING IS AN ART.®

Custom Picture Framing and Gallery
Established 1989




Offering a wide variety of styles and finishes to choose from, we design and craft every frame with care right here in our shop. Specializing in conservation framing. Now located at:

**2130 Marietta Avenue
Lancaster Pa, 17603
717-393-6337**

Monday-Friday 10-4, Saturday 10-2

RAFFLE

Prizes from last year's raffle 

Each year we have a raffle set up at FORCEpkg to raise money for a Graphic Communications and Printing Technology student at Thaddeus Stevens College and a Graphic Design student at Pennsylvania College of Art & Design. Support a great cause and enter for a chance to win!

TO PURCHASE RAFFLE TICKETS

Make a donation on either [gofundme page](#) or in-person, cash donations will also be accepted at FORCEpkg. We encourage participants to donate in advance (QR Codes below) and show your donation email receipt at FORCEpkg to redeem your tickets.

TICKET PRICES & QUANTITIES

3 tickets = \$5 | 10 tickets = \$10 | 25 tickets = \$20 | 60 tickets = \$50 | 130 tickets = \$100

WHEN YOU RECEIVE YOUR RAFFLE TICKETS

This year to streamline the ticketing process, donors can submit names and contact information via the sign-up sheet located at the raffle and will be given a number to write on the back of tickets as identification. Recipients can also keep the duplicates (the tickets that say "KEEP THIS COUPON") if they choose to determine if they are a winner.

A SAMPLING OF AVAILABLE RAFFLE ITEMS:

(2) SPECIAL EDITION PRINT CRAWL POSTER COLLECTIONS

For the ultimate Print Crawl enthusiasts, this year we have—not just one—but TWO Print Crawl poster collections to give away. The collections feature a poster from each year, including the "missing poster" from 2020! They are all fancifully digitally printed, framed and ready to hang!

- One TOP DONOR will automatically win one of the poster collections!
- One lucky winner will be drawn from the raffle to win the other collection!

CURIO. GALLERY & CREATIVE SUPPLY GIFT BASKET
\$50 gift card and arrangement of art accessories

LANCASTER GIFT BOX
An assortment of Lancaster County goodies

PRINT CRAWL GEAR
T-shirt, sticker, notebook

TYPOTHECARY LETTERPRESS PRINTED GOODS
Framed letterpress print & note cards

FOXDUCK GEAR
Stickers, hat, silk screened poster and branded canvas bag

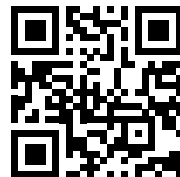
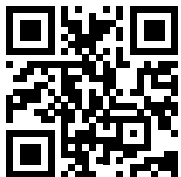
FREE FROM KITCHEN GIFT BASKET
An assortment of gluten free, scratch-made goodies



2023 T-shirt



 **SUPPORT THADDEUS STEVENS HERE**

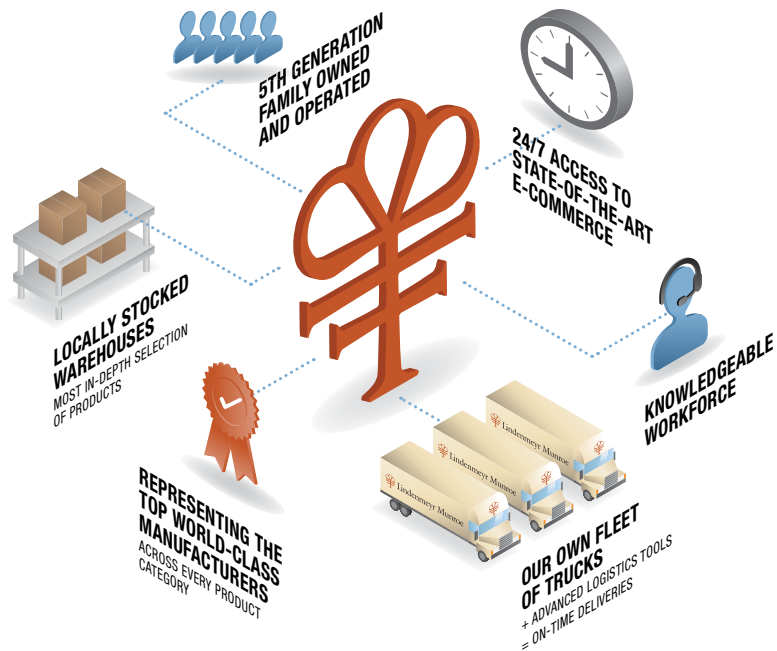


 **SUPPORT PCA&D HERE**



Count on **US**

The leading independent **paper, packaging,** and **wide format** solutions provider in the United States.



For more information, please contact your local Lindenmeyr Munroe sales representative.

1065 Strickler Road | Mount Joy, PA 17552 | 800.222.4908

LindenmeyrMunroe.com



Kelly J. Corbin - Iron Valley Real Estate of Lancaster
Realtor, ABR, CSP

kjcpurdue@icloud.com
C: 717.201.4868 | O: 717.740.2221
kcorbin.ironvalleyrealestate.com

1834 Oregon Pike, Suite 11,
Lancaster, PA 17601

Facebook



Website



IRON VALLEY
REAL ESTATE

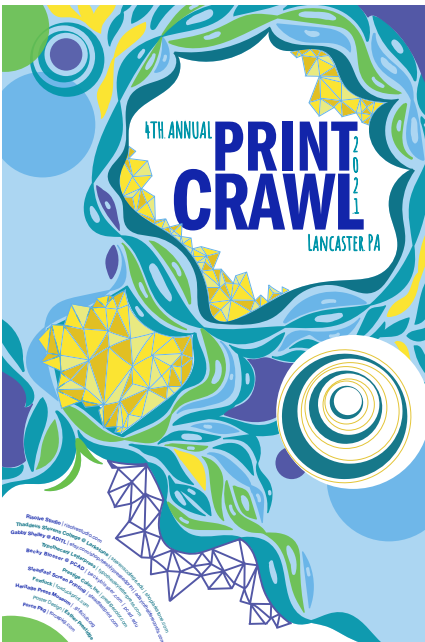
History of Letterpress Printing:

Letterpress printing originated with Johannes Gutenberg's invention of movable type in the 15th century, revolutionizing book production and spreading knowledge. It quickly spread throughout Europe, making books more accessible. Advancements in press technology fueled its growth, and it played a crucial role in the rise of newspapers and magazines. It allowed printed materials to be mass-produced much easier. Although letterpress has now been largely overshadowed by offset printing (a newer form of printing), letterpress has recently made a pretty strong comeback for more artisanal and specialty projects.

*You can see letterpress in action at the following stops: [Typothecary Letterpress](#), [Heritage Press Museum](#)

Lancaster has a strong community

of independent printers and book artists who create limited edition prints, handmade books, and other artistic printed materials. These artisans contribute to the vibrant and creative printing culture in the city.



CENTRAL MARKET FLOWERS

Print Crawlers,
ENJOY 20% OFF

YOUR TOTAL PURCHASE TONIGHT
WHEN YOU SHOW US YOUR POSTER



CROSSWORD CLUES

ACROSS

3. Family that established Lancaster's first major printing press
7. Classical type of printing making a comeback in recent years
8. An acronym for the 4 colors that make up all other colors in print
10. Illustrator who designed this year's Print Crawl poster

DOWN

1. Stop #1 marked on the map
2. Printed a Bible and made books more accessible & affordable
4. Museum in Lancaster committed to preserving the tradition of Letterpress Printing
5. This extremely well known man worked as a printer before working as what made him famous
6. Type of printing that originated in China and is extremely versatile
9. A form of type created in the 15th century by Gutenberg

Take your completed crossword puzzle to Decades at 438 N Queen St to receive free arcade tokens or a voucher for future use!

LANCASTERPRINTCRAWL.COM

@lancasterprintcrawl

PUZZLE

The crossword puzzle grid is composed of empty cells. The numbered starting points are:

- 1: Down, top-left cell.
- 2: Down, top-right cell.
- 3: Across, second row from top, second cell from left.
- 4: Down, middle row, fourth cell from left.
- 5: Down, middle row, eighth cell from left.
- 6: Down, middle row, tenth cell from left.
- 7: Across, middle row, seventh cell from left.
- 8: Across, bottom row, first cell.
- 9: Across, bottom row, second cell.
- 10: Across, bottom row, seventh cell.

Decorative elements include:

- A large 'AND' in a decorative font on the left side.
- A large 'OS' in a decorative font in the bottom-left quadrant.
- A large 'THE' in a decorative font in the bottom-right quadrant.
- A large 'ONLY' in a decorative font in the top-right quadrant.
- Several hand-drawn icons of hands pointing to specific grid cells: one pointing to cell 1, one to cell 2, one to cell 4, one to cell 6, one to cell 8, and one to cell 10.

PRINT CRAWL

FAQ

MUST I REGISTER FOR THE PRINT CRAWL?

Yes, you need to register by purchasing a blank poster on lancasterprintcrawl.com before the event OR show up to our centrally located registration table in Heritage Square at the intersection of King and Queen Streets where you can pay cash or use a credit card to purchase your poster to participate in the print crawl. The event is set up as “pay-what-you-can” ranging from \$0-\$20 with the additional option of donating to our fundraisers the night of the event OR through our GoFundMe campaigns. The money generated from poster sales goes towards the event costs to ensure we are able to continue coordinating the Print Crawl each year. The raffle and GoFundMe campaigns raise money for one graphic design student at Pennsylvania College of Art & Design and one design/printing student at Thaddeus Stevens College of Technology. Donations go directly to whichever school you choose to support.

WHERE DO I PICK UP MY POSTER FOR PRINT CRAWL PARTICIPATION?

You will need to pick up your poster at our centrally located registration table in Heritage Square at the intersection of King and Queen Streets in front of the Visitor’s Center from 4-8:30pm on 9/1/23.

WHERE DO I PICK UP MY PRINT CRAWL SHIRT I PRE-ORDERED?

You will need to show your receipt to pick up your shirt along with your poster at our centrally located registration table in Heritage Square at the intersection of King and Queen Streets in front of the Visitor’s Center from 4-8:30pm on 9/1/23.

WHERE CAN I PURCHASE A PRINT CRAWL SHIRT THE NIGHT OF THE EVENT?

Whatever inventory of shirts is available the night of the crawl will be available at the centrally located registration table in Heritage Square at the intersection of King and Queen Streets in front of the Visitor’s Center from 4-8:30pm on 9/1/23.

DO I HAVE TO REGISTER FOR PRINT CRAWL IF I AM CHOOSING THE \$0 OPTION?

Yes, you still need to register online or in person. This helps us keep track of the number of participants and plan for future years.

WHAT BUSINESSES ARE OFFERING DISCOUNTS THIS YEAR?

Our Town, Larkstone, Foxduck, Levensgoods... Be sure to look through the entire program booklet while you are waiting in line to see all the discounts and coupons.

WHAT TIME DO I NEED TO START TO COMPLETE MY POSTER?

We highly recommend you start as close to 5pm as possible to have the best chances of completing your poster. The Registration table will be ready to go by 4pm, but the print shops won’t be ready until 5pm. Every year we try to make as many adjustments as possible to accommodate the crowds and avoid unfinished posters. We want you to finish your poster too! We do recommend you purchase your poster ahead of time to avoid waiting at the registration table. Just show your receipt/ticket and you’ll receive everything to participate in the crawl.

WILL THERE BE POSTERS FROM PREVIOUS YEARS FOR SALE?

Due to the nature of the event, requiring participation by you to complete the design, there are not posters from earlier years available for sale. There will however be T-shirts and tank tops from previous years available here and the night of the event for 50% off until they run out.

WHAT TYPES OF PAYMENT ARE ACCEPTED?

If you register ahead of time, you’ll need a credit card. If you show up to the registration table on 9/1/23, you can pay cash or use a credit card to purchase your poster to participate in the print crawl.

WHAT IS THE ROUTE FOR THE CRAWL?

While there is no set order you need to finish your poster in, allowing you to jump from stop to stop in any order, you can find the map on page 18-19. The map will show the print locations, sponsor locations, food, and parking options.

WHERE IS THE BEST PLACE TO PARK?

Street parking is free after 6pm and the Lancaster Parking Authority Garages are \$5 after 5pm if you leave before 5am the following day, you can find the map on page 18-19 that is marked with the parking garages along the route that this applies to. It does need to be a Parking Authority garage for the \$5 flat rate to apply.

WILL THERE BE FOOD OR DRINKS DURING THE CRAWL THIS YEAR?

We have added a few food trucks and some beverages along the route for your convenience this year. All refreshments will be marked on the map in the program booklet. Some will be complimentary and some will require additional payment.

WHAT ARE THE START/STOP TIMES FOR THE PRINT CRAWL?

All stops will be open from 5-9pm with registration starting at 4pm. From there you can start your crawl wherever you would like.

I PAID TOO MUCH FOR THE PRINT CRAWL - HOW TO I GET MY MONEY BACK?

Luckily, there are coupons and discounts in the program booklet. The more discounts you redeem, the more money you get back!

IS LANCASTER SAFE AFTER DARK?

We have never had any issues during our event. This is the seventh year we are doing this and it has always been during First Friday in September, with sunset at 7:37pm. Yup I looked it up for you! So please plan accordingly. Like any city, there are always possibilities.

WHY IS THERE A FUNDRAISER IF I HAVE TO PAY FOR THE PRINT CRAWL?

The money generated from poster sales goes towards the event costs to ensure we are able to continue coordinating the Print Crawl each year. The raffle fundraiser is an opportunity to support our local design/print programs in the way of scholarship money. There are two separate gofundme pages set up. One for Pennsylvania College of Art and Design and one for Thaddeus Stevens College of Technology. The raffle is located at FORCEpkg where you will pick up your sticker for the Print Crawl.

IS THE PRINT CRAWL ACCESSIBLE?

The Print Crawl is a mostly accessible event with a few exceptions. If anyone needs assistance in completing a stop along the crawl, someone will be able to assist you.

ARE THERE RESTROOMS ALONG THE ROUTE?

We have restrooms at a few spots along the route, if you need one, just ask.



WHY IS THERE A PAY-WHAT-YOU-ARE-ABLE FEE SETUP THIS YEAR?

In our survey last year, we heard every answer from the \$5 price was too cheap, to perfect, to too expensive. In order to try and keep everyone able to enjoy the event, we thought we'd try a pay-what-you-are-able option and see how it goes. We don't want someone to be left out if they are a student in college or going through a rough patch financially. This is a really fun event and we want everyone to be able to join in.

I'D LIKE TO BE A SPONSOR, VOLUNTEER, OR DESIGN A FUTURE POSTER HOW DO I SIGN UP?

Email us at lancasterprintcrawl@gmail.com and let us know and we'll get you all the information.

A collage of images at the top shows various printing equipment: two mugs, a blue printer, a person at a computer, a large flatbed printer, and a laser engraver. Below this is the text 'putting the puzzle together.' in a handwritten font. The main image is a large floor graphic made of puzzle pieces. The central piece is a large puzzle piece with a blue background, a rainbow, a sun, and various icons like a heart, a plus sign, and a person. The floor graphic is surrounded by white puzzle pieces.

putting the puzzle together.

TyrrellTech
Digital Printing Systems

sales • service • support
flatbed printers • ink and supplies
print & cut devices • laser engravers
laminators • vinyl cutters • flatbed cutters
888-845-0300 • new jersey, maryland, florida
nobody makes it easier • info@tyrrelltech.com

STANDARD GROUP AD